

Impact Report

2024/25



*Kensington
+ Chelsea
Foundation*

A better life together

“If you are fortunate enough to be able to support your fellow residents, there is no better way to give than through the Kensington and Chelsea Foundation. It provides not only a fulfilling experience but also gives you a great sense of community involvement.”

Local resident + donor

Welcome

I am delighted to report that we continue to make progress in our mission to improve the lives and life chances of the most vulnerable in our community.

From April 2024 to March 2025, we have used our local knowledge and networks to support the most pressing needs in the community, funding 106 projects and supporting over 18,400 of our most disadvantaged residents. We have worked with our supporters – individuals, businesses, trusts and foundations – to connect them to the most vital issues in K+C and have raised an incredible £2.1 million. Much of this funding has been directed to support projects in our three core portfolios – Mental Health, Education and Skills and Employment.

During the year, we were the Mayor of K+C's chosen charity. We are extremely grateful for all the opportunities Cllr Will Lane gave us to spread the word about our work and raise much needed funds to support our community.

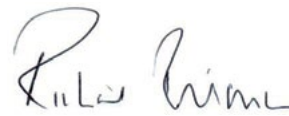
The Mayor's personal commitment to our work on mental health was vital, as we aim to tackle this difficult issue and ensure our residents have timely access to the right support. According to our own research, 1 in 12 of our residents has a diagnosis of depression, and 1 in 6 of our young people are struggling with a mental health issue. With the Mayor's support we were able to raise £86,404 which will all be used to fund projects helping those in our community who are facing enduring or severe mental health issues, anxiety, depression or isolation and loneliness.

K+C is a borough of extremes and of opportunities – a place where poverty and deprivation exists alongside wealth, investment and philanthropy. Our belief has always been that local philanthropists can and do want to support the community to solve some of our greatest problems and build a better borough for everyone. We have set ourselves the ambitious goal of increasing our income to £5million annually by 2030, to enable us to deepen our impact and achieve lasting change.

We believe in the power and impact of local giving to bring our community together and build a more equal, cohesive and thriving borough.

I remain incredibly grateful to you, our loyal and committed supporters, for your engagement, encouragement and generosity. I would like also to commend to you the excellent work of our small team, who work tirelessly throughout the year.

Yours sincerely



Richard
Chairman,
The Kensington + Chelsea
Foundation

Some key highlights of the year

April

Partnership Event

We celebrated the impact and achievements of the many fantastic frontline organisations we work with in Kensington and Chelsea.



June

Storytelling Event

We heard from 3 local heroes who work tirelessly to give young people in our borough a brighter future, including what inspired them to support young people at risk and the realities for young people growing up in a borough of extremes.



August

Our corporate partners got stuck in to clearing up the canalside at our Volunteering Day.

2024

May

We were delighted and honoured to be chosen by RBKC Mayor, Cllr Will Lane, as his mayoral charity.

July

Our research report, A Deepening Divide, was featured in the national press.

September

Our supporters, Jennifer and Toby Greenbury, hosted a wonderful event for us at the Anya Cafe in Chelsea.



October

The Mayor completed Royal Parks Half Marathon raising over £15,000.



February

First meeting for participants in The Mayor's Charity Boxing Challenge.



December

The Mayor of K+C hosted a special Christmas Carol service to raise funds for our work at the beautiful Christ Church, Kensington.

November

We held a fabulous fundraising raffle at the Cadogan Christmas Lights Switch-On event.

January

The Cadogan Arms provided a festive lunch for a local older people's group.



2025

March

To celebrate International Women's Day, we held a panel event to hear from 3 incredible local women delivering essential services to women and girls across the borough.

About The Kensington + Chelsea Foundation

£2.1m

raised

106

projects funded

18,400

disadvantaged and
vulnerable residents
supported

We are an independent local charity set up in 2008 to tackle the key inequalities in our community. Our vision is of a borough where everyone has the opportunity to live happy, healthy, fulfilled lives. To achieve our vision, we identify and fund impactful local projects which improve the lives and life chances of some of our most vulnerable and disadvantaged residents. We believe passionately in the power of local giving and use our extensive local knowledge and networks to connect donors to the most vital issues in the community.

In 2021 our research, 'Poverty and Prosperity in Kensington + Chelsea', identified significant inequalities in the borough across education, health and employment. In response to this, we established three social investment portfolios to direct funds towards tackling these issues. Since then, we have made considerable progress and have seen tangible impact through the projects we have supported.

In March 2024, we published an update to our original research: *Poverty and Prosperity in Kensington + Chelsea: A Deepening Divide* which highlighted that, although there have been improvements in some areas of need, there remains much to do to achieve our vision.

We are a small but very effective team and last year, 97p in every £1 donated to The K+C Foundation was spent on our charitable activity. Our projects reached 18,400 residents with support and services, providing a lifeline to those in crisis.

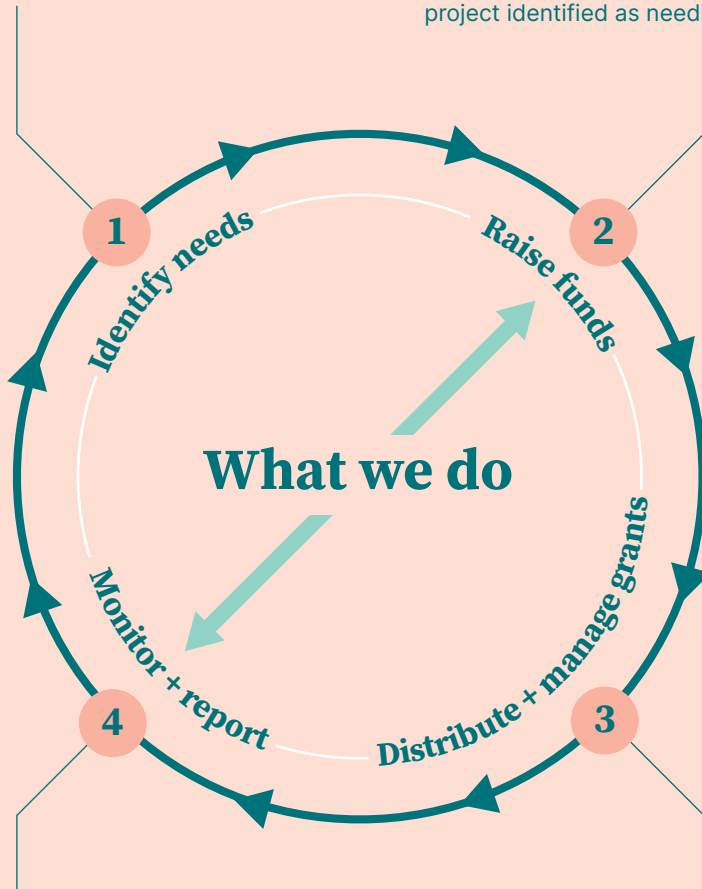
Identify needs

Commission research

Gather intelligence through our extensive local networks

Raise funds

Develop partnerships with corporate and individual donors, as well as trusts and foundations, to match their philanthropic goals with one of our funds or a particular project identified as needing support



Monitor + report

Visit projects in our portfolio to monitor progress

Facilitate volunteering opportunities

Bring charity partners together to learn and collaborate across each portfolio

Gather and assess impact data every 6 months

Distribute + manage grants

Convene and train community stakeholder decision making panels

Conduct robust due diligence

Our funds

- Improving Mental Health
- Reducing Education Inequalities
- Increasing Skills + Employment
- Special Projects
- Community Spirit
- Donor Managed Funds

1

Identify needs using our extensive networks and insights

Our March 2024 report, **Poverty and Prosperity in Kensington + Chelsea: A Deepening Divide** highlighted evidence of growing inequalities in our community.



Poverty

- 3 of the borough's wards have a higher rate of child poverty than London or national averages and the difference in child poverty rates between the lowest and highest wards is a staggering 27.9%.
- The number of children eligible for free school meals is 33%. This is considerably higher than both the national and London averages and represents a sharp increase of 50% over the past 5 years.

Education

- Fixed term school exclusions (also known as suspensions) remain high, with K+C the 7th highest out of 33 London boroughs.
- Children on Free School Meals, those with Special Education needs and those from Black African/Caribbean backgrounds were more likely to be excluded than their peers.

Life expectancy

- Life expectancy differs significantly between residents living in different areas of the borough. For example, there is a 19 year life expectancy difference between women living in Notting Dale and Holland wards, which are just a third of a mile apart. This difference has increased by 5 years since 2021.

Rent Costs

- Our previous report found an astonishingly high proportion of residents' income was spent on rent, at 69.5% for residents renting a one bedroom flat. Our new data shows that this has now increased even further by 6.5% to 76%.

Mental Health

- 1 in 4 residents report high levels of anxiety.
- 1 in 6 young people have a mental health issue but waiting times for mental health services are among the worst in London.
- 1 in 12 adults have a GP diagnosis of depression.
- There has been a 28% increase in mental health referrals between 2022 and 2023.



2

Raise funds working with our donors to support impactful projects



To achieve our vision, we use our extensive local knowledge and networks to identify partners and projects likely to make the greatest impact in our community. We work with corporate and individual donors to match their philanthropic goals with one of our portfolios or a particular project that we have identified as needing support.

Our aim is to provide expert knowledge, guidance, due diligence and reporting for supporters keen to make a difference in their community. We believe that giving to local causes should be an easy, impactful and rewarding process for donors. We are proud to be supported by many local individuals and businesses.

In May 2024, we were delighted and honoured to be chosen by Cllr Will Lane as his Mayoral Charity.

The Mayor wanted to focus his fundraising efforts on our Mental Health programme:

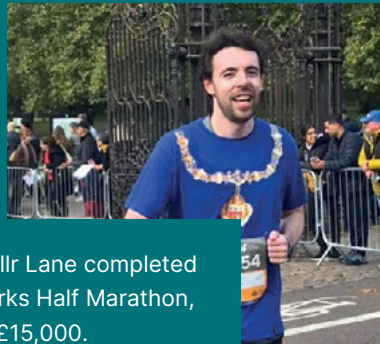
“I worry that when people hear about mental health these days they may switch off. It’s too easy to become jaded to hearing about a problem that we often can’t see and that takes so many forms. Unless you or someone close to you has been directly affected, it’s difficult to understand how serious poor mental health can be. That’s why I’m supporting the K+C Foundation’s work to provide support to our residents and a lifeline to those in crisis – nothing is more important.”



In February 2025, planning started in earnest for the keynote event of the mayoral year – The Mayor’s Charity Boxing showdown! Working with local boxing club Fit For Life Youth, we recruited 20 aspiring boxers who trained with the Mayor for a gruelling 12 weeks until the main event in May 2025. A fantastic evening of high quality boxing bouts culminated in the Mayor’s fight – which was declared a draw by the judges. The event raised over £40,000, boosting the Mayoral fundraising grand total for his term of office to £86,404.



In October Cllr Lane completed the Royal Parks Half Marathon, raising over £15,000.



As Christmas approached, Christ Church, Kensington hosted the Mayoral carol service.



Corporate Support

The support we receive from businesses across Kensington and Chelsea is vital to the work of the K+C Foundation. We have supporters in every sector – from estate and land management to hospitality, property, and retail.

Our partners view the Foundation as a reliable and effective channel for local philanthropy. We aim to continue building strong partnerships with businesses to create lasting impact in the community.

Corporate donors not only provide essential funds but also contribute their time and expertise through volunteering, hosting career sessions for young people, or offering meals and experiences.

“It’s been a pleasure to have such engaged and enthusiastic volunteers, we really value having volunteers with their hospitality experience supporting us!”

Refettorio Felix

As well as contributing over £500,000 to the Foundation in 2024/25 our corporate partners have:

- Provided over 2000 hours of skilled volunteers.
- Raised over £8,500 by adding a pound to the bill in restaurants.
- Hosted local groups for shared meals to combat loneliness and isolation.
- Funded mentoring sessions and employed local young people.
- Provided raffle prizes, venues and catering for our events and meetings.
- Donated laptops, PCs and the furnishings of an entire restaurant to local charity partners.



Our funds

Between April 2024 and March 2025 we received income of **£2,109,484** from 207 donors – individuals, businesses, trusts + foundations, and organisations.

Individuals	£458,100
Businesses	£512,281
Organisations (including Statutory)	£434,625
Trusts + Foundations	£653,281
Other (Gift Aid, Endowment contributions, interest)	£51,197

This income was invested in our charitable funds as follows:

Programmes	People Reached	Orgs	Projects	Total Investment	%
Improving Mental Health	3694	11	11	£176,333	16%
Reducing Education Inequalities	4417	13	16	£294,542	26%
Increasing Skills and Employment	777	8	8	£294,462	26%
Winter Warmth and Cash First	1090	6	2	£250,098	22%
General Charitable/Community Spirit	6236	50	60	£77,085	7%
Voluntary Sector Support Fund (VSSF)	2262	9	9	*	0%
Fundraising Costs				£33,750	3%
Total	18,476	97	106	£1,126,280	100%

*£200,000 invested in April 2025

3

Distribute + manage grants

For our key portfolios, we recruit and train resident panels to ensure that local people with lived experience of the issues we are tackling are selecting our project partnerships. Together the panels determine which projects are likely to have the best impact for residents and will become our portfolio partners for the next 3 years.



As part of this process, it is also our responsibility to carry out robust due diligence on each project we consider and identify clear and measurable outcomes. This year, we have distributed and managed grants to **106 impactful projects**.

We receive regular progress reports for the projects in our key portfolios, which allow us to monitor and ensure grant funds are being used as expected and projects are on track, and to update our donors.

Networking meetings are held twice a year for organisations receiving grants from our portfolios. These meetings promote sharing of best practice, increasing referrals and building lasting connections between grassroots groups working on similar issues.

Our team arranges regular visits to see the projects we are supporting, accompanied by donors where possible.

As part of our commitment to shifting the power and giving the community a voice in social investments, we have transitioned towards a participatory grant making model. We partner with and train local residents who have lived experience of particular social issues and bring their experiences and insights in deciding which organisations stand the best chance of making a difference.

Our recognised experience and expertise has resulted in requests for advice and guidance from other funders who as a result, have directly invested over £100,000 into charitable projects in the borough. Projects we have recommended included two which support local residents into employment and one helping children across 3 Chelsea schools to improve their attainment, behaviour and social skills, and reduce their risk of exclusion.

We agreed a 3 year partnership with Earl's Court Development Company (ECDC) to manage their Community Fund of £180k/year in conjunction with Hammersmith and Fulham Giving. Over 100 applications were assessed, and at the end of the process, grants were awarded to 20 organisations delivering a broad range of projects in the Earl's Court area.

We were delighted to work in collaboration with the 'Givings Together' partnership to improve access to funding for the hardest to reach groups in our communities. Funded by the Cornerstone partnership, we distributed £18,000 in funding to the Traveller community located under the Westway, an extremely marginalised part of the North Kensington community which has historically missed out on local funding opportunities.

With our long-standing partners, Cadogan Estates, we managed a Community Grant Fund to target grassroots projects in the Chelsea area and selected 2 projects in the first round of funding.

Reducing Education Inequalities Fund

Supporting children and young people to reach their potential

2024/25 was the third and final year of our three year commitment supporting projects aiming to reduce education inequalities in our community. The projects benefitted children and young people from primary age upwards and included:

£294,542

invested

16

projects

4,417

beneficiaries

- One to one and small group academic support and tutoring for primary and secondary age children.
- Working with young people at risk of exclusion to provide media training and mentoring, as well as routes to employment in creative industries.
- Holistic programmes for young people at risk of exclusion including academic support, mentoring, counselling and advocacy.
- A schools-based empowerment programme for young women and girls.
- A borough-wide summer photography project which helps young people to explore and develop skills in creative arts.
- Book gifting events in primary schools to tackle book poverty and promote reading.

With the conclusion of the above partnerships, in January 2025, we recruited a panel of young people with experience of being excluded from, or struggling to achieve in, mainstream education to help design our new portfolio – Closing the Education Gap. After training and facilitated discussions, the panel assessed over 20 projects and selected 10 new and impactful partnerships which we will fundraise for over the coming 3 years.



Case Study

Kane's story

Kane is 10 years old and lives in Kensington and Chelsea. He needs extra health and education support due to autism and ADHD. During one term, Kane was excluded from his mainstream primary school in RBKC on three separate occasions and was at continuous high risk of permanent exclusion due to difficulties with behaviour. These periods of exclusion from school were very stressful for Kane and his family.

Our Reducing Education Inequalities funding allows a local adventure playground to employ a case worker who supports young people at risk of poor educational outcomes and those that have been excluded, or are at risk of exclusion, from school. Support includes mentoring, and providing volunteering, training and learning sessions to improve skills and confidence and reduce the missed education while out of school.

Kane attended project sessions during his fixed term exclusions as well as after school and at weekends. This helped reduce social isolation, risk of exclusion and improved his wellbeing. The case worker supported Kane to develop his skills as a 'play worker' and deliver basic learning activities and social activities with other children during main play sessions.

Kane has now been moved to a special school and his mum says that she feels he was supported by the project during an extremely difficult and challenging time when he would have been totally isolated without any access to learning activities.

Improving Mental Health Fund

Combatting isolation, loneliness and mental health challenges

This has been the third and final year of our commitment to support projects tackling a wide range of mental health needs. The projects supported by the fund provide multiple services for local residents across the spectrum of needs in this complex area:

£176,333

invested

11

projects

3,694

beneficiaries

- Social isolation is a real issue for a significant number of older residents in the borough. Our projects have helped them to learn new skills and make friends, breaking down barriers and offering new experiences.
- More than 1 in 6 young people in K+C have a mental health issue, and our projects tackled this over the past year with targeted therapy sessions both in school and community settings.
- As shown in our case study, we have also helped those experiencing homelessness or addiction issues to get back on track.
- We supported vital specialist work to help people leaving secure mental health care to reintegrate into the community through support activities in non-judgemental, non-clinical environments.

As these partnerships come to a conclusion in 2025, we are preparing to select new projects for our next 3 year portfolio. We will be recruiting a panel of local people with relevant experience and will award grants in 2026.



Case Study

Peter's story

Peter became homeless in January 2024. He found out he was HIV positive, was facing addiction issues and was struggling with his mental health. He visited a project funded by the K+C Foundation in Earls Court which provides a free weekday, restaurant-quality, 3-course lunch, plus access to a team of support workers who provide a plethora of practical support tailored to each individual's needs. This includes mental health support, complementary therapies, art group and hosted caseworkers to help with each individual's needs.

Peter accessed mental health support and engaged with drug and alcohol crisis teams. Some time ago he had an assessment for longer term therapy but at the time was not ready or able to commit to weekly therapy. Now in permanent accommodation, Peter visits the project every day. He has asked to engage in therapy and is shortly due to start counselling.

Peter does not want to fall into old patterns. He has been sober and clean for some time. He experiences anxiety, panic attacks and is often overwhelmed, presenting to A&E for assistance. Peter wants to improve his mental health to move forward, so that he may gain stability to support his addiction recovery and wellbeing and continuing to improve his physical health.

Peter said:

“I am so grateful for the Mental Health support as I was feeling overwhelmed and couldn't function on a daily basis. Now I am feeling hopeful again.”

Improving Skills + Employment Fund

Supporting ambitions

In the final year of our commitment to support projects helping local people who face a number of employment issues, our partners are reporting increased referrals for their services. Residents who needed support included:

£294,462

invested

8

projects

777

beneficiaries

- Adults with learning disabilities who were helped to build skills and find suitable work opportunities, including with social enterprises.
- Young people who were not in employment, education or training (NEET) were provided with sessions on confidence building, CV writing and interview coaching. Our partners connected with employers to provide links to work experience, qualifications and jobs.
- People returning to the workplace, often after a break to care for families, were helped with 121 coaching on job application skills and interview preparation, including advice and provision of interview outfits.
- We were also able to work with our Corporate supporters to deliver interview skills training and coding workshops.

As these partnerships come to a conclusion in 2025, we are preparing to select new projects for our next 3 year portfolio. We will be recruiting a panel of local people with relevant experience and will award grants in 2026



Case Study

Zeina's story

As a young adult with Down Syndrome, Zeina had very little exposure to the world of work. She is a very active person and enjoys practical tasks, however she struggled a lot with her communication and social interactions. Holding her back from building social relationships and developing in her career. She joined sessions run by an organisation funded by the K + C Foundation, providing learning, development and training for neurodiverse adults to improve skills and confidence leading to employability. At first, Zeina would often separate herself from other students and refuse to interact with staff.

She joined a social enterprise project producing and selling smoothies which gave Zeina the opportunity to focus on a practical task, whilst developing her softer skills.

Zeina loves sport and physical activity, but her ultimate dream is to work in security. The project arranged for her to volunteer as a steward at Lords Cricket Ground during the summer season, where she handed out score cards and answered visitors' questions. She did a fantastic job, demonstrating how she could apply her learnings to different environments.

Her support worker said:

“It is remarkable how far Zeina has come in the last year, from not interacting with others, to getting paid for her work and continuing to throw herself into new work opportunities.”

Small Grants Fund

VSSF – Small Grants Fund

We work in partnership with RBKC to manage the VSSF (Voluntary Sector Support Fund) Small Grants Fund. The Fund aims to help Kensington and Chelsea to become a fairer borough, to improve outcomes for the most vulnerable residents and to nurture the talents of our residents and help them to reach their full potential.

We delivered a programme which involved recruiting a panel of 10 residents, training them in grant-making, supporting them to design the criteria for the fund and make the final decisions on which applications should receive funding.

After a thorough and transparent assessment process, the panel selected 9 local groups to receive funding. We are monitoring the progress and impact of these projects. During the first year, the nine projects supported 2,262 beneficiaries. We are delighted to share feedback from residents who have benefitted from three of the selected projects.

Minds United Football Club CIC provides wellbeing and employment activities to actively improve the mental, physical, social, and emotional wellbeing of adults and young people.

“The training courses and volunteer opportunities provided by the club have been life changing. I’ve gained valuable skills, found a job and feel more confident about my future.”





Community Development 4 All CIC (CD4ALL) aims to empower and uplift the local community by providing a wide range of projects and initiatives that address their diverse needs and aspirations.

“They have truly transformed our lives. Not only did I get the help I needed with housing, but I also received the support to ensure my children have what they need for school. The food and vouchers were a lifesaver over the holidays, and the advocacy team made me feel heard and supported. Having someone who understood what I was going through made all the difference. I can now focus on my daughter’s well-being and advocate for her, which I couldn’t do before. I’m grateful for the support that has helped us rebuild our lives.”

Neighbourhood Doulas offers a free, specialised doula (birth companion) service. It works with the most at-risk pregnant women and new parents in Kensington and Chelsea to provide them with a high standard of emotional and practical support.

“The class was amazing! It was honestly more than I could hope for, especially as it’s a free resource. The educators/doulas created a safe environment for everyone to be heard, and given that I’m having twins, it was nice that this was always incorporated. I loved how positive the space was and how I felt after each session- a really positive experience that I would recommend to others.”



Community Spirit Fund

Bringing joy and healing to the community

We have continued to offer our easily accessible small grants fund, designed to support events and activities that bring joy, hope and healing to the community. The funding available is up to £1000 per grant and supports one-off events and short-term projects such as cultural and celebration events, school holiday activities, workshops, sports sessions and project equipment. Since the beginning of April 2024, we have had 59 applications of which 41 were approved.



“This grant allowed us to bring the community together to celebrate a huge achievement the kids had made. It allowed us to highlight their wins and the consistency and hard work they all put in.”

“Without the funding provided by the KCF the children would have missed the chance to celebrate Eid alongside peers from diverse backgrounds. The grant enabled them to enjoy a range of activities, such as henna and face painting, and to eat around one table together.”

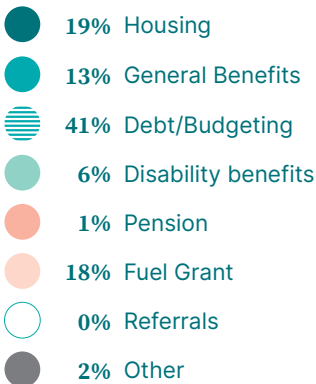
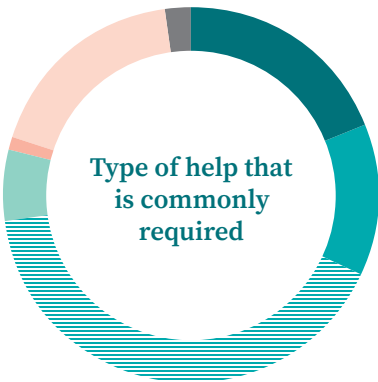
“This is the highlight of the year for these children and the inspiration they get from these shows which are a rare treat to most of them is priceless. Thank you so much for giving the chance to enjoy something that many people in the borough take for granted but these children would not get to enjoy without your help!”

“We just want to express our heartfelt thanks for your ongoing support and for helping us bring this special celebration to our community. Your contribution made a real difference, and we truly appreciate it.”

Supporting Our Community

Winter Warmth + Cash First

Originally started in 2022 as a Winter Crisis Campaign, we have continued to support low income households across the borough who are struggling to make ends meet and having to choose between heating and eating. Help includes financial support with fuel bills, cash to assist with buying urgent essential items like food, and wraparound advice from professional agencies on issues such as debt management and income maximisation.



This support has been delivered in partnership with key local advice agencies including Citizens Advice K+C, Age UK K+C, Nucleus Legal Advice Centre and Nova New Opportunities and with generous funding from RBKC, local businesses, trusts and residents.

During the year, thanks to these donations, more than 1,000 residents in the borough received emergency financial support and invaluable advice.

The appointments with the advice agencies include a wider financial review, benefits check, debt advice or housing referrals as necessary, so that they are receiving support to make a permanent improvement to their circumstances as well as short term financial help.

The chart illustrates the type of help that is commonly required.

The Future

K+C is a borough of extremes and of opportunities – a place where poverty and deprivation exists alongside wealth, investment and philanthropy. Our belief has always been that local philanthropists can and do want to support the community to solve some of our greatest problems and build a better borough for everyone. We have set ourselves the ambitious goal of increasing our income to £5million annually by 2030, to enable us to deepen our impact and achieve lasting change.

From 2025/26, we will be selecting new 3 year investment partnerships in our three core thematic priorities – education, mental health and skills and employment – and these decisions will be advised and informed by local residents with lived experience of some of the challenges we aim to address. By participating in one of our portfolio panels, residents will share their valuable insights and experiences with us, whilst gaining skills, training and paid work experience.

Alongside our core portfolio partnerships, we will be seeking out ‘transformational projects’ which offer an opportunity to test models for early intervention with a potential to scale up to benefit the whole borough. We look forward to testing an intervention to reduce secondary school exclusions from Autumn 2025 and reporting on the results.

Our work over the past 5 years, both in terms of our research reports and local partnerships, has increasingly meant we are able to identify gaps in service provision and build collaborations amongst local partners with the skills to address them. We are in the early stages of building a coalition of grassroots groups who can provide holistic support and care to residents in and around the World’s End Estate in Chelsea, which we hope will be in a position to launch service delivery in 2026.

While the need for our work remains as clear and urgent as ever, our small team is ready to rise to the challenge and grow both our income and impact over the next 5 years to build a less divided borough, where all residents can thrive.

4

Monitor + report getting closer to the community

We know that the high quality of the work we do relies on close relationships based on mutual trust and respect between us and our local partners. Throughout the year we are in regular contact with them, we monitor their progress and provide six monthly and year end updates to our donors on all projects.



We arrange project visits throughout the year for our supporters to connect with the work they are funding and see it in action. Their feedback is overwhelmingly positive and allows donors to appreciate directly the importance and impact of the work they help to fund. We also provide opportunities to our supporters to volunteer in the borough, giving them a hands-on experience of making a difference in their community.

“We would like to thank the Kensington and Chelsea Foundation for their support over the past three years of this project. Your close, trusting partnership has been incredibly valuable and we are so appreciative of the opportunity to work alongside a partner who shares the same hopes and goals for young people as we do. We hope to continue to work together to support children, families and the Kensington and Chelsea community to flourish.”

AllChild

“We cannot thank the Kensington & Chelsea Foundation enough for your continued support. Your funding has allowed us to deliver meaningful, life-changing outcomes for young people across Kensington & Chelsea. It has enabled us to exceed our original targets and provide comprehensive, tailored support to those facing significant barriers. Your investment has not only empowered individuals to access employment, education, and training but also created a ripple effect within families and the wider community.”

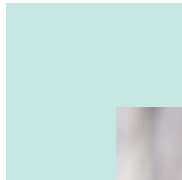
MO1 Youths

Acknowledgements

We are immensely grateful to the following funders who contributed to our operating costs in 2024/25. This allows us to focus our efforts on raising funds for our priority programmes.

- Cadogan
- City Bridge Foundation
- DMGT
- Kilfinan Trust
- Kusuma Trust
- LMAX Group
- The Julia Rausing Trust

We also wish to thank our wonderful members, patrons and champions for their continued support of our work.



“Working collaboratively with Kensington and Chelsea Foundation has been a rewarding and enjoyable experience. From the enormous variety of charities in our community, the dedicated team at the Foundation have been invaluable intermediaries by bringing to our attention causes that we feel passionately about and enabling us to make targeted donations which have made a real difference to the recipients.”

Rockspring Charitable Trust

If you are looking to make a real difference in the community and support us in our vision to create a borough where everyone has the opportunity live happy, healthy, fulfilled lives, we can advise you and support you on that journey. Please contact us to discuss our work and how we can work with you to support some of our most vulnerable residents – team@thekandcfoundation.com

@kandcfoundation

www.thekandcfoundation.com

Registered Charity Number 1125940

*Kensington
+ Chelsea
Foundation*

A better life together